



St. Martins Way, Thetford, IP24 3QA £150,000

Situated to the south of Thetford, St. Martins Way this three-bedroom mid-terraced house has been recently decorated throughout, providing a fresh and inviting atmosphere for its new occupants.

Upon entering, you will find a spacious entrance hall that leads to all the ground floor accommodation. The three well-proportioned bedrooms offer ample space for family living or can be easily adapted for use as a home office.

The fully enclosed rear garden, which provides a private outdoor space perfect for enjoying sunny days or hosting barbecues with friends and family.

This home boasts excellent access to the A11, making it an ideal location for commuters or those who enjoy exploring the surrounding areas. This property is available now and presents a fantastic opportunity for anyone looking to settle in a welcoming community.

Do not miss the chance to make this lovely house your new home.

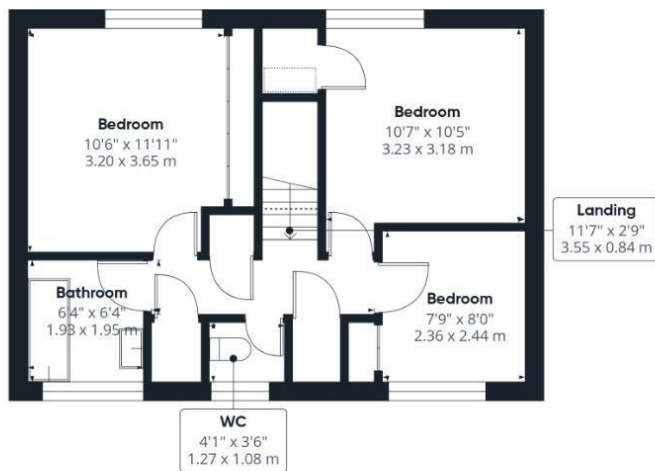
- SOUTH OF THETFORD
- SHORT WALK TO TOWN CENTRE
- MID TERRACED HOUSE
- DOWNSTAIRS CLOAKROOM
- ENCLOSED REAR GARDEN
- WITHIN EASY REACH OF A11
- ESTABLISHED RESIDENTIAL AREA
- THREE BEDROOMS
- GAS CENTRAL HEATING
- NO ONWARD CHAIN!



Council Tax Band: A - EPC Rating: C 75



Ground Floor



Floor 1

Approximate total area⁽¹⁾

901 ft²
83.8 m²

Reduced headroom

14 ft²
1.3 m²

(1) Excluding balconies and terraces

Reduced headroom
..... Below 5 ft/1.5 m

Calculations reference the RICS IPMS 3C standard. Measurements are approximate and not to scale. This floor plan is intended for illustration only.

GIRAFFE 360

